

**Santa Maria del Giudice” Tectonic Unit**  
**Scisti Sericitici (SSR)**

Outcrop located on the pathway 00 between Monte Cupola e “Le Cimette” (Monte Pisano Hiking trails map).



Outcrop of phyllite and calcareous phyllite exposed along the pathway 00 in direction of “*Quattro Venti*” locality, two hundred metres before the “Le Cimette”.  
Alternance of grey and green purplish phyllite and calcariferous phyllite. Centimetre thick grey metalimestone layers are locally intercalated.

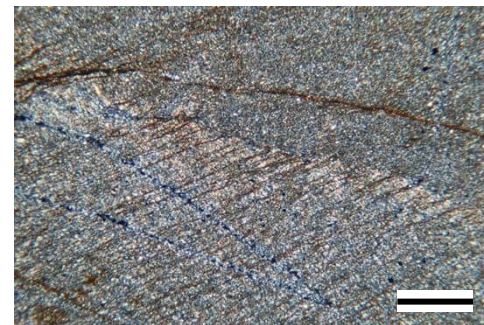
**MP18B**

43°47'15.70"N, 10°26'18.16"E



3.4 cm

Finely laminated greenish phyllite consisting of millimetre thick phyllosilicate layers with calcite veins and/or nodules parallel to the foliation.



Very fine grained foliation marked by phyllosilicate layers cross cut by spaced crenulation cleavage, well developed in the phyllosilicate.

scale bar: 0.25 mm