

Variscan Basement
Filladi e Quarziti di Buti (BUT)
Cambrian?-Ordovician?

Grey-greenish medium to fine grained and hematite-rich metasandstone, phyllite and metasiltite with locally chloritic-sericitic schist.

Outcrop located along the SP56 road at the hairpin bend below the climbing wall (Monte Pisano Hiking trails map 1: 25.000).



Decimetre alternation of finely laminated light grey quartzite levels and light brown phyllite. Foliation of direction NW-SE plunging to NE. In the slope it is exposed the discordant contact with the overlying Anageniti grossolane member (Verruca Formation).

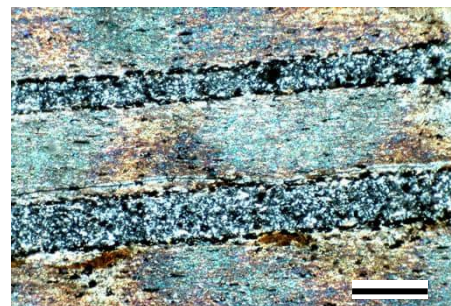
MP1A

43°44'04.41"N, 10°34'06.70"E



3 cm

Phyllitic quartzite made up of millimetre thick dark grey and shiny grey quartzite levels alternate with thin discontinuous phyllosilicate layers. Glossy grey foliation surfaces rich in phyllosilicate with a phyllitic appearance.



White mica-rich lepidoblastic layers with weak undulose extinction and thin (< 0.5 mm) very fine-grained quartz layers.

scale bar: 0.5 mm