

Santa Maria del Giudice” Tectonic Unit
Scisti Sericitici (SSR)

Outcrop located on the pathway 00 between Monte Cupola e “Le Cimette” (Monte Pisano Hiking trails map).



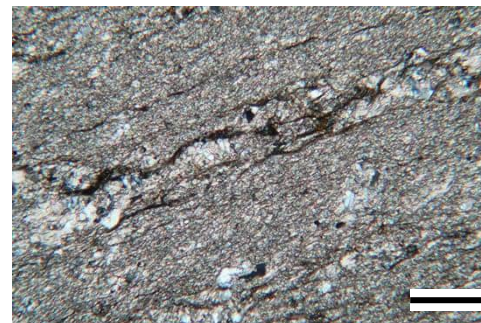
Grey brownish metalimestone defined by alternance of grey and dark grey discontinuous levels. The outcrop is in an esplanade, partly covered by vegetation in the spring season.

MP18C

43°47'10.95"N', 10°26'22.78"E



Brownish fine-grained metalimestone with intercalated millimetre thick (1 – 2mm) very fine-grained phyllosilicate levels.



Foliation marked by very fine grained recrystallized calcite with occurrence of coarser grained calcite veins parallel to the foliation.

scale bar: 0.2 mm