

Santa Maria del Giudice” Tectonic Unit

Scisti Sericitici (SSR)

Greenish, red, purplish or grey muscovite-rich phyllite with calcareous base (Scisti Seritici SSR - ?Aptian p.p. - ?Albian p.p.)

Sedimentary facies: pelagic abissal plain.

Outcrop located on the western side of Monte Cupola,
along the road for the “Langdut Belvedere”.



Small outcrop of grey purplish phyllite with diffuse occurrence of calcite veins.

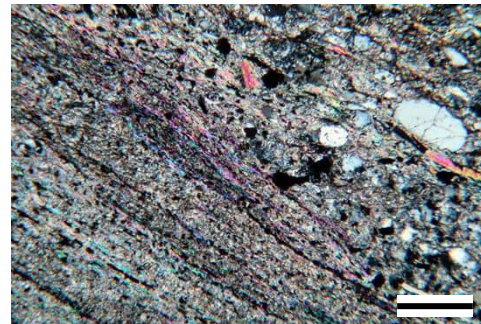
MP18A

43°46'56.04"N, 10°25'46.22"E



3 cm

Finely laminated grey phyllite, consisting of tight alternation of millimetre thick phyllosilicate and 0.5 -1.0 mm thick calcite layers.



Fine-grained micaceous layers alternate with coarser level with abundant content of clastic mica and quartz grains.

scale bar: 0.2 mm