

**Santa Maria del Giudice” Tectonic Unit**  
**Cipollini (SSR1)**

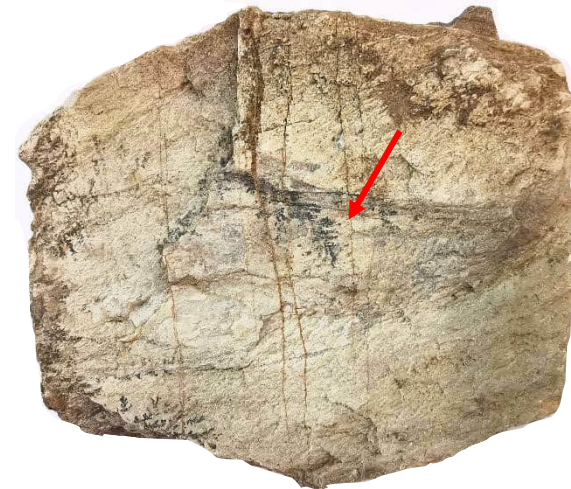
Outcrop located on the western side of Monte San Giuliano along the local road from “Case Baroni” to “Le Capanne”.



Grey calcschist (SSR1) made up of massive to finely laminated centimetre to decimetre thick (5 – 20 cm) calcite-rich layers alternating with finely laminated grey marly levels.

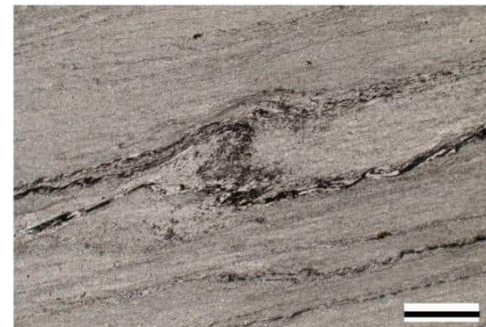
**MP17B**

43°46'44.90"N, 10°26'14.92"E



2.7 cm

Light grey finely foliated calcschist with tight alternations of calcite (3 - 5 mm) and phyllosilicate levels (<1 mm). Crenulation lineations and manganese dendrites (red arrow) are visible on the foliation.



Very fine grained (<0.05 mm) calcite and oxides-rich layers with rare calcite and quartz veins.

scale bar: 1.2 mm