

**“Santa Maria del Giudice” Tectonic Unit**

**Metacalcri ad Entrochi (ENT)**

*Bathonian p.p-Tithonian p.p.*

*Coarsely layered grey marble and metacalcarenite, characterized by abundant articles of crinoids. Rare nodules and lenses of dark cherts and of polygenic metacalcirudite. Sedimentary facies: pelagic continental slope.*

Outcrop located on the western slope of Monte San Giuliano along the local road from “Case Baroni” to “Le Capanne”.



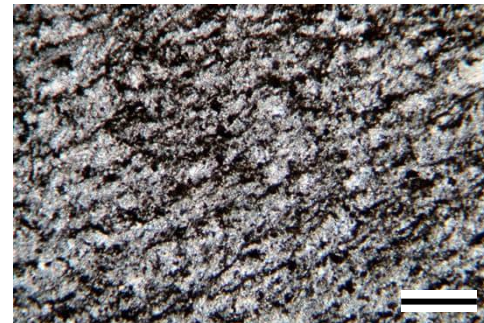
The lower (basal) part of the formation in contact with the calcschist consists of metalimestone in centimetre strata alternating with centimetre to decimetre levels of finely foliated metamarl.

**MP15A**

43°46'31.12"N, 10°26'19.36"E



Finely foliated yellowish grey phyllitic marl, with tight alternations of thin (<1 mm) phyllosilicate-rich and millimetre-thick (1-2 mm) calcite-rich levels.



Calcite layers alternate with thin and discontinuous Fe-oxides and phyllosilicate-rich films

scale bar: 0.2 mm