

“Santa Maria del Giudice” Tectonic Unit
Marmi dei Monti Pisani (CCE)

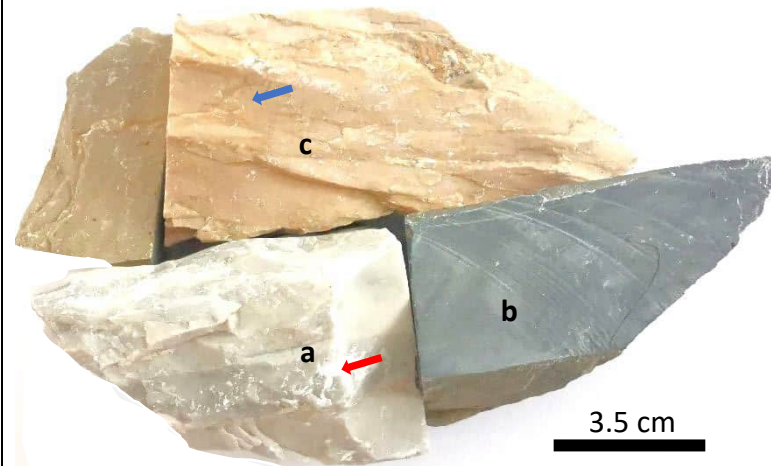
Outcrop of the marble located in the large abandoned quarry along the “SP Lungomonte” near the San Giuliano Terme town.



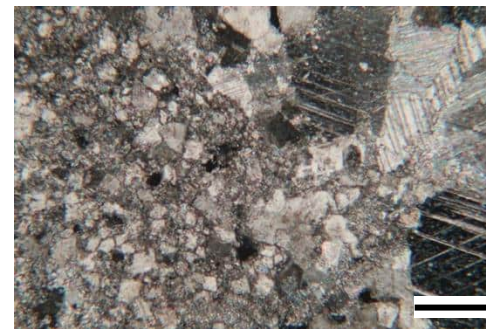
Stratified white to yellowish grey and light brown marble, steeply dipping layers of decimetre to metre thicknesses (yellow arrow) crossed by fracture surfaces (white arrow).

MP12B

43°45'15.76"N, 10°26'47.87"E



Very fine-grained marble varying in colour from white to dark grey and pink. Presence of calcite veins (red arrow) in the white sample (a) and dissolution-recrystallization surfaces (blue arrow) in the pink sample (c)



Marble with very fine grained (<0.05 mm) recrystallized calcite with euhedral shape. Coarse grained calcitic veins.

scale bar: 0.2 mm