

“Santa Maria del Giudice” Tectonic Unit

Grezzoni (GRE)

Norian-Rhaetian

*Grey recrystallized dolomite, more rarely pink, organized in thick layers, separated by wavy dissolution surfaces.
Frequent occurrence of metalimestone with light grey oolitic levels. Sedimentary facies: carbonate platform.*

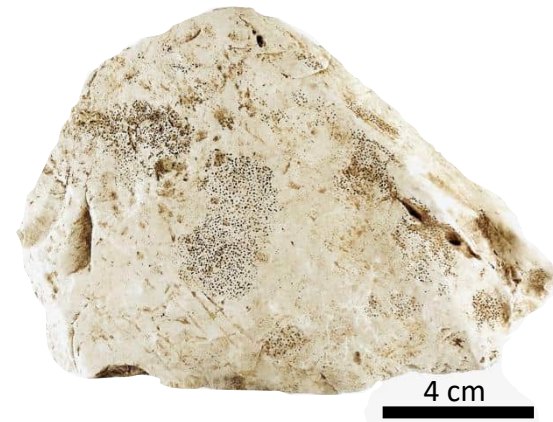
Outcrop along the western side of 117 path, locality “Il Sugherone”, at the head of the valley.



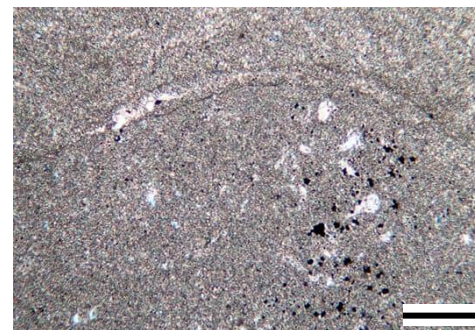
Pinkish grey dolomite, roughly stratified with reddish altered surfaces.

MP11

43°45'44.50"N, 10°27'16.90"E



Fine-grained grey dolomite without stratification.



Very fine-grained dolomite (average grain size 30 μm), with fossiliferous content. A fragment of bivalve shell (lamellibranchs) in the upper half of photo

scale bar: 0.2 mm